



New Tech Network

NTN PATHWAYS

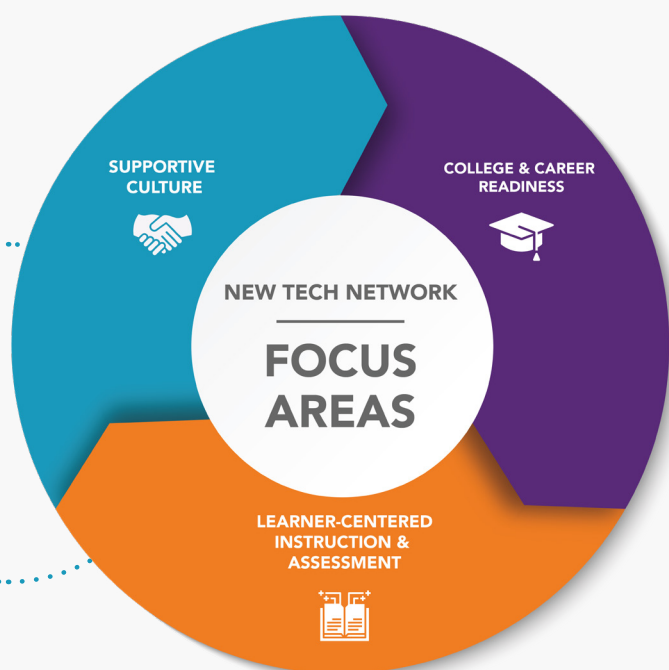
Targeted guidance that strengthens your team – without stretching them too thin.



You envision your school as a place where hardworking teachers feel valued, every student stays engaged, and real progress sticks.

That's why NTN offers evidence-based pathways that invigorate educators by uplifting their strengths, simplifying their systems, and equipping them to engage all students.

NTN Pathways are a year-long guided set of services that offer educators focused attention and coordinated support for leading systemic change in a high-impact area. Designed around the NTN Focus Areas of College & Career Readiness, Learner-Centered Instruction and Assessment, and Supportive Culture, each pathway offers expedited improvement in a priority focus through structured coaching and tools that equip educators to sustain new practices.



Focus Areas



College & Career Readiness:

Helping every student access a future shaped by possibility.



Learner-Centered Instruction

& Assessment: Engaging students in learning that fosters deeper understanding and growth.



Supportive Culture: Building daily practices that foster courage through connection.

How It Works

Duration: 1 year

Investment: \$20-36k

What's Included:

- Choice of one Accelerator
- 3 onsite coaching days for direct, in-school support
- 1 day virtual leadership session
- 10 virtual coaching sessions for ongoing guidance and refinement
- NTN Membership, an annual membership that includes essential tools, resources, and support services

“

“Giving tangible, go-to instructional strategies helps teachers reflect on what the kids engage with and adjust from there. Seeing, and then implementing, these practices, and being able to reflect on the differences has been very beneficial for our teachers.”

Latasha Turner

Summit Road Elementary Principal

College & Career Readiness Pathway Accelerators

- Strengthening Instructional Leadership in Your School (1 or 3 days)
- Tackling Challenges Using Improvement Science (3 days)
- Learner-Centered College and Career Practices (1 or 3 days)

Learner-Centered Instruction & Assessment Accelerators

- Learner-Centered Instructional Practices (1 day)
- Learner-Centered Assessment Practices (1 day)
- Foundational Practices for New Teachers (1 day)
- AI Classroom Tools (1 day)
- Learner-Centered Instructional, Assessment & Culture Practices (3 days)
- Introduction to PBL: Planning Engaging Project Based Learning Units (3 days)
- Planning Engaging Problem-Based Math Units (3 days)

Supportive Culture Accelerators

- Learner-Centered Culture Practices (1 day)
- Co-Creating Authentic Community (1 day)
- Leading School Change (1 day)

**Ready to create
a more engaged school?**

Let's chat.



New Tech Network