

NTN360

You Have Big Dreams for Your School. Let's Chase Them.



Lasting transformation becomes possible when interconnected changes work together.

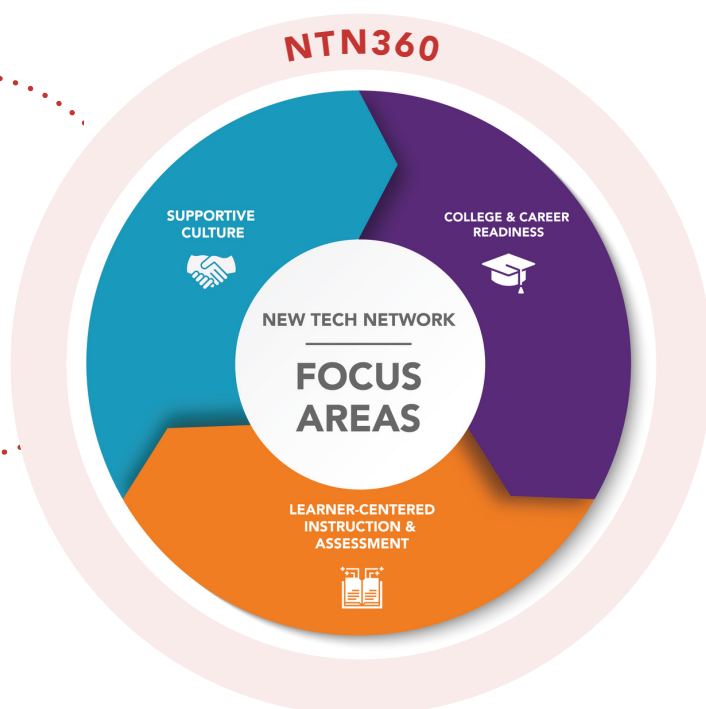
That's why NTN partners with schools in a three-year, whole-school transformation—integrating College & Career Readiness, Learner-Centered Instruction & Assessment, and Supportive Culture into a cohesive, sustainable model grounded in high-quality project-based learning. With a clear roadmap, hands-on coaching, and a nationwide network of innovative educators, NTN360 ensures change isn't just another initiative—it's an evolution that empowers educators and engages students.

What You'll Get

- + A Clear, Actionable Roadmap:**
Step-by-step guidance to align goals, strengthen leadership, and sustain progress long-term.
- + Personalized Coaching & Support:**
On-site and virtual coaching tailored to your school's specific needs.
- + Proven Strategies:**
Effective, research-backed approaches that have fostered deep learning and joyful teaching in schools across the country.

What You'll Do

- ✓ Receive care.** Get clear, actionable solutions from a team that believes in you—and knows that making the biggest impact shouldn't come at the cost of your well-being.
- ✓ Enjoy learning.** Experience professional learning that fuels your creativity and ambition through engaging experiences that improve day-to-day work.
- ✓ Grow together.** Work in spaces where you collaborate, lead, and build strong teams, so success is a shared journey that moves everyone forward.
- ✓ Sustain impact.** Implement changes that are aligned, adaptable, and designed for long-term success, so your work continues making a difference year after year.



Impact

EMPOWERED EDUCATORS

20,000

New Tech Network has worked with over 20,000 educators to implement college and career ready outcomes, learner-centered instruction and assessment, and supportive culture.

94%

94% of NTN educators report improved processes for collaborative learning

93%

93% of educators engaged with NTN College and Career Access services agree that working with NTN makes a difference for the students it serves

ENGAGED STUDENTS

NTN students **outperform on state exams** across multiple states, subject areas, and grade levels

NTN students **made statistically significant gains** in critical thinking

New Tech Network students **persist in college at a rate of 82 percent** compared to 74 percent nationally

How It Works

Duration: 3 years

Investment: Customized Pricing

What's Included:

- 3 days of onsite planning and design with leadership teams (1 planning day and 2 days of Leadership Residency)
- 5 days of virtual planning support
- 3-day PBL 360 training (year 1)
- 3-day Intro to PBL training (years 2 & 3)
- 2 days of Leadership Virtual Support
- 17 days of onsite coaching
- 7 days of virtual support
- NTN Membership, an annual membership that includes essential tools, resources, and support services

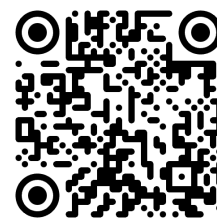
//

"When students experience PBL, they are forced to struggle productively. Too often we prepare students for a calculated school experience, asking them to memorize information and regurgitate it on an assessment. Teaching students to persevere and ask questions prepares them for success."

Diana Pochmara
Richfield Public School
Academy (PSA) teacher

Transformation should feel exciting and empowering.

Let's build a thriving school community—together.



New Tech Network