



New Tech Network

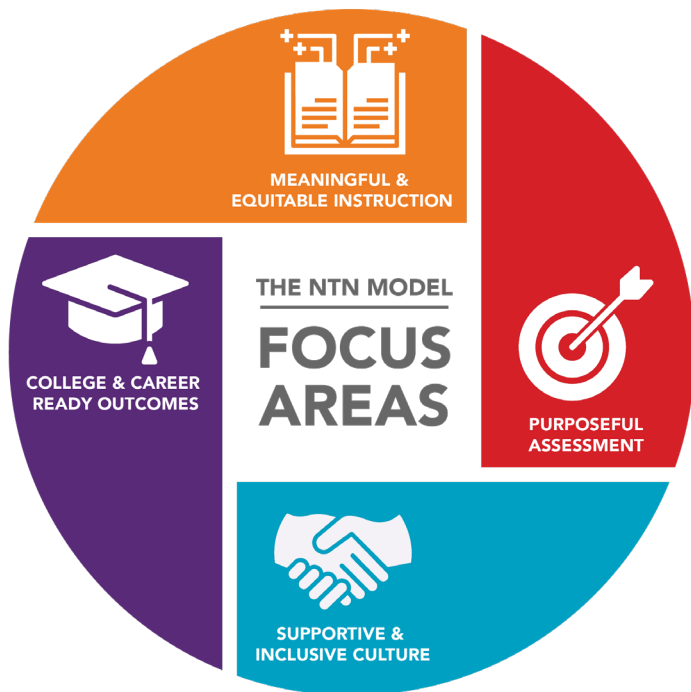
# WHOLE SCHOOL TRANSFORMATION FOR EVERY CHILD

New Tech Network (NTN) is a national non-profit dedicated to systemic and equitable change in education. We center schools as the units of change, and teachers and school leaders as the agents of that change. Partnering with districts and working closely with leadership teams makes change scalable and sustainable. After twenty years of change making, we have learned what works and can adapt quickly.

We transform individual schools and district learning communities by:

- **Providing** New Tech Network's structured, responsive, research-based whole school approach to help our partners and their stakeholders transform both individual schools and school clusters into equitable, supportive, and meaningful learning environments.
- **Sharing** field-leading knowledge, research, and resources to drive awareness and uptake of leading approaches to educational change that center on college and career ready outcomes, supportive and inclusive culture, meaningful and equitable instruction, and purposeful assessment.
- **Connecting** teachers, administrators, and district leaders as part of a supportive, committed, forward-looking network to learn, share knowledge, and work together to create change and solve entrenched challenges.

## THE NEW TECH NETWORK MODEL IS DESIGNED AROUND FOUR FOCUS AREAS:



**COLLEGE & CAREER READY OUTCOMES:** Prepare each student for postsecondary success with the knowledge, skills, and mindsets to be ready for college and career: Collaboration, Knowledge and Thinking, Written Communication, Oral Communication, and Agency.

**SUPPORTIVE & INCLUSIVE CULTURE:** Foster a school-wide culture of belonging, care, community, and growth for adults and students. This type of culture helps ensure that students and teachers alike have ownership over the learning experience and school environment.

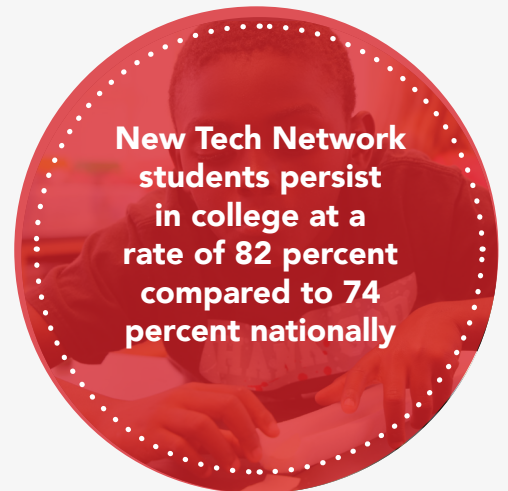
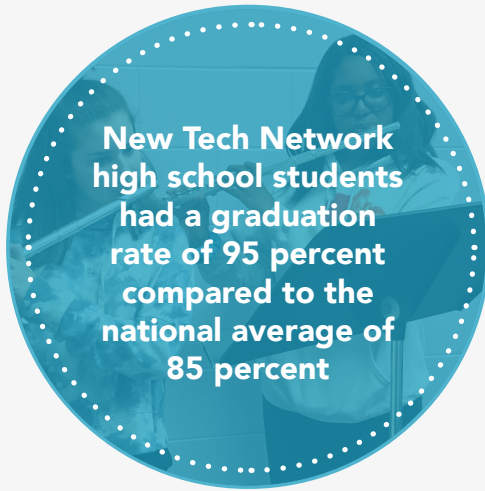
**MEANINGFUL & EQUITABLE INSTRUCTION:** Center the instructional approach on authentic, complex thinking and problem-solving. Based on our experience, high-quality, relevant project-based learning (PBL) is the best way for students to experience deep, contextual, and shared learning and acquire and demonstrate proficiency in college and career ready outcomes.

**PURPOSEFUL ASSESSMENT:** Cultivate shared, school-wide understandings of equitable, purposeful assessment and grading practices that inform teacher instruction, emphasize individual student growth, and demonstrate progress towards college and career readiness. These include performance assessments for students to demonstrate their learning in age-appropriate ways.



## EVIDENCE OF SUCCESS

The research and development of New Tech Network is made possible by support from leading philanthropic organizations and district engagements.



## A DIVERSE NETWORK

New Tech Network is a diverse partnership of schools and districts committed to achieving ongoing improvement and lasting change.



Read more at [newtechnetwork.org/impact](https://newtechnetwork.org/impact)

## BY THE NUMBERS

95,000+  
STUDENTS

5,700+  
TEACHERS

38,800+  
GRADUATES OVER THE  
PAST SIX YEARS

## THE NETWORK MAP

